

December 13, 2010 RESERVOIR LEVEL AND SNOW UPDATE

As we approach the middle of December, we are still waiting for the first good snowfall of the season in order to regain some ground relative to the average. Last week we again lost ground because the actual increase in the snowpack was negligible whereas the increases in the average are about 0.8 inches in the Upper Rio Grande and Rio Chama basins and 0.4 inches in Sangre de Cristo basin. The forecast chance of snow this week is not encouraging, with the best chance being 30% on Thursday night and Friday. Meanwhile storage in Elephant Butte and Caballo dams is still increasing about 1,000 ac-ft per day with total river flow at San Marcial being approximately 600 cfs. At this time last year storage was 100,000 ac-ft more.

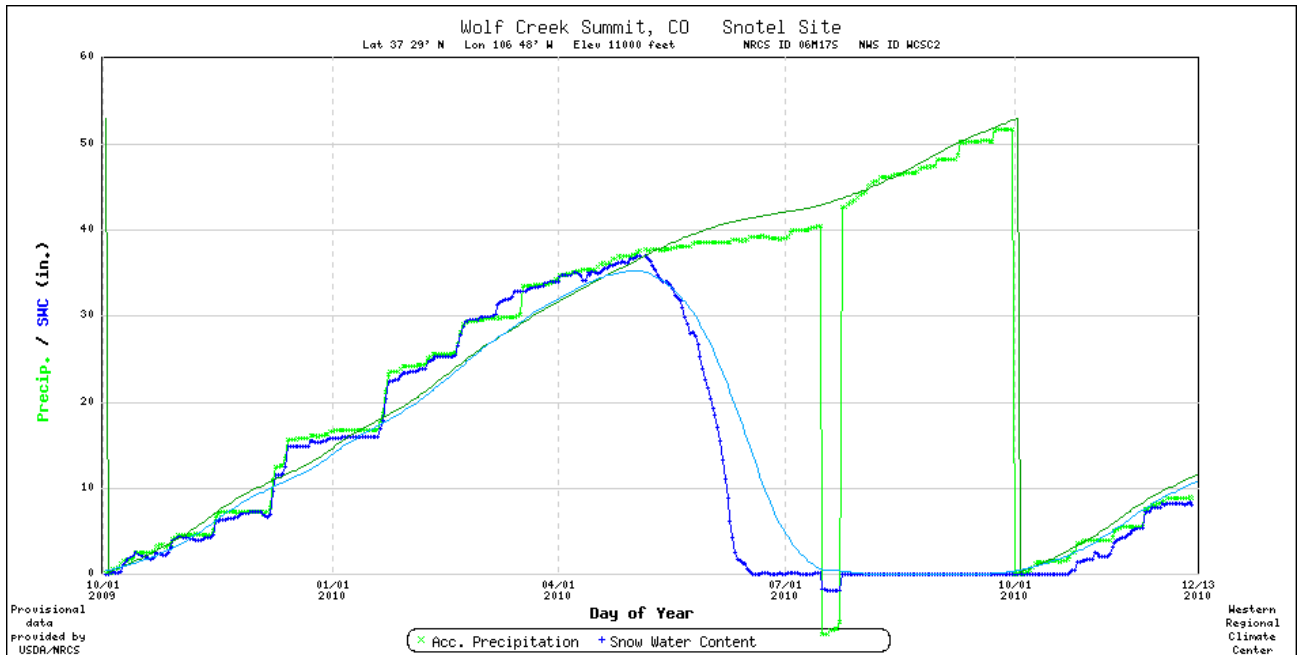
COMBINED STORAGE Elephant Butte and Caballo

December 10, 2010 423,780 acre-feet

S N O W - P R E C I P I T A T I O N U P D A T E
Based on Mountain Data from NRCS SNOTEL Sites
As of Monday December 13, 2010

BASIN	ELEV.	SNOW WATER EQUIVALENT	TOTAL PRECIPITATION
Data Site Name	(Ft)	%	%
		Avg	Avg
UPPER RIO GRANDE BASIN			
	Basin wide percent of average	58	73
RIO CHAMA BASIN			
	Basin wide percent of average	52	54
SANGRE DE CRISTO MOUNTAIN RANGE BASINS			
	Basin wide percent of average	21	50

WOLF CREEK



FORECAST

UPPER RIO GRANDE VALLEY/EASTERN SAN JUAN MOUNTAINS BELOW 10000 FT-
INCLUDING...CREEDE...SOUTH FORK
319 AM MST MON DEC 13 2010

TODAY
 SUNNY. HIGHS 40 TO 51.
 SOUTHWEST WINDS UP TO 10
 MPH.

TONIGHT
 MOSTLY CLEAR. LOWS 15 TO
 25. SOUTHWEST WINDS 10 TO
 15 MPH.

TUESDAY
 MOSTLY SUNNY. HIGHS 40 TO
 46. WEST WINDS 10 TO 20
 MPH.

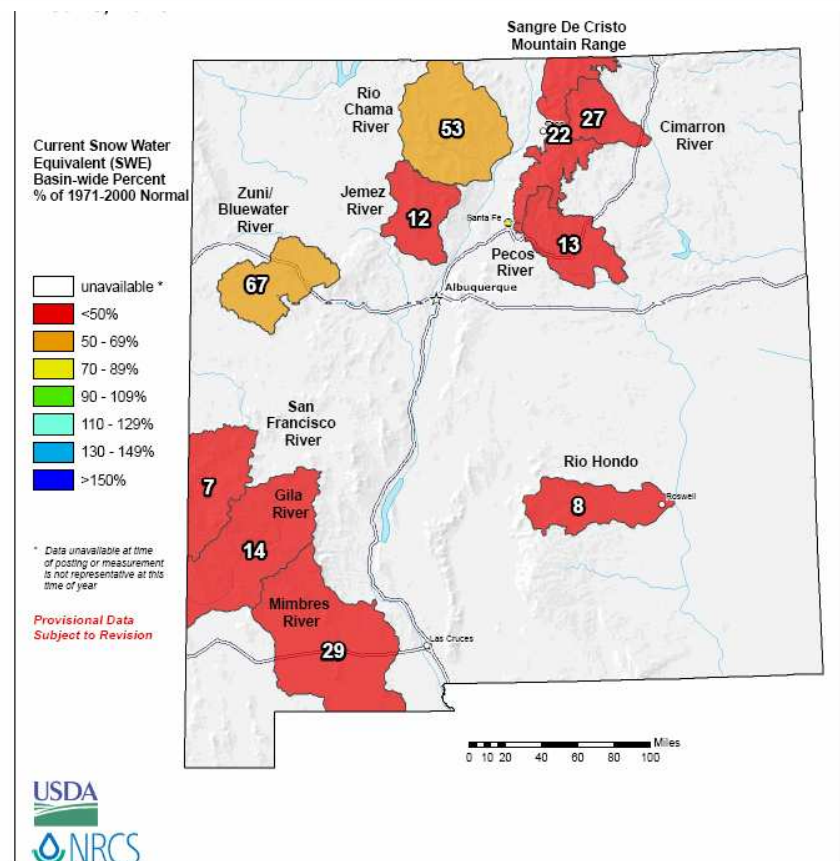
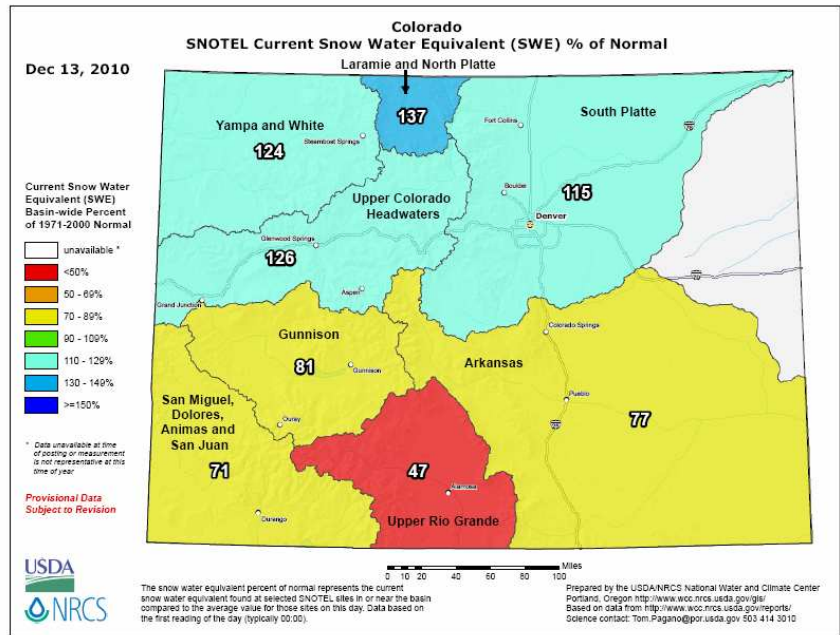
TUESDAY NIGHT
 MOSTLY CLOUDY. A 10 PERCENT
 CHANCE OF SNOW AFTER
 MIDNIGHT. LOWS 17 TO 27.
 WEST WINDS 10 TO 25 MPH.

WEDNESDAY
 CLOUDY. SLIGHT CHANCE OF
 SNOW IN THE MORNING...THEN
 SLIGHT CHANCE OF RAIN AND
 SNOW IN THE AFTERNOON.
 HIGHS 33 TO 42. SOUTHWEST
 WINDS 15 TO 25 MPH. CHANCE
 OF PRECIPITATION 20
 PERCENT.

WEDNESDAY NIGHT AND
 THURSDAY
 MOSTLY CLOUDY WITH A 20
 PERCENT CHANCE OF SNOW.
 LOWS 14 TO 26. HIGHS 28 TO
 37.

THURSDAY NIGHT AND FRIDAY
 MOSTLY CLOUDY WITH A 30
 PERCENT CHANCE OF SNOW.
 LOWS 11 TO 23. HIGHS 26 TO
 36.

FRIDAY NIGHT THROUGH SUNDAY
 MOSTLY CLOUDY WITH A 20
 PERCENT CHANCE OF SNOW
 SHOWERS. LOWS 7 TO 20.
 HIGHS 29 TO 39.



Basins in Colorado (top) and New Mexico (bottom) as a percent of average.